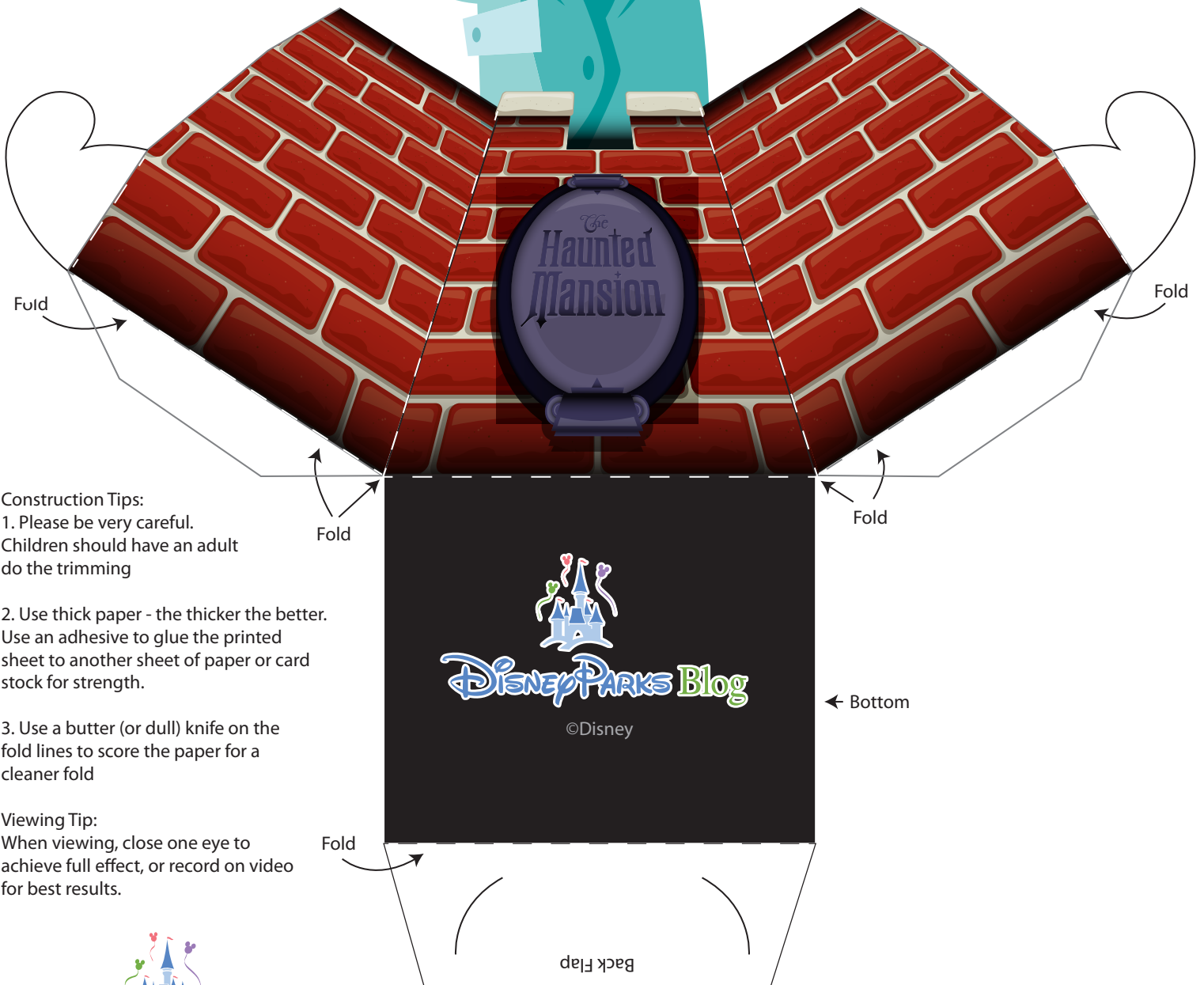


HITCHHIKING GHOSTS

8.5" X 14"

Instructions:

1. Carefully trim entire figure - then cut along the semi-circles on the back flap
2. Score and fold along all white dashed lines (tip: use a butter (or dull knife) along the folds lines to score the paper before folding)
3. Carefully cut along the dotted lines in the face to make 2 wedges
4. Bend the face inward so that the lighter colored wedge on the face is hidden and secure in place with transparent tape on the back of the figure - do this for both wedges on the face
5. Fold along all scores and assemble the base by inserting the tabs into the semi-circle slots
6. Finally, slightly bend the figure just below the head to straighten



Construction Tips:

1. Please be very careful. Children should have an adult do the trimming
2. Use thick paper - the thicker the better. Use an adhesive to glue the printed sheet to another sheet of paper or card stock for strength.
3. Use a butter (or dull) knife on the fold lines to score the paper for a cleaner fold

Viewing Tip:

When viewing, close one eye to achieve full effect, or record on video for best results.



Disney Parks Blog